



**GEARHEADS** Frame size 80mm sq. (3.15 in. sq.)

METAL TYPE & BALL BEARING TYPE

▶ **RATED TORQUE OF GEARHEAD**

MODEL	Synchronous Speed		500	300	200	120	100	60	50	30	20	15	10	9	
	Ratio	Speed	50Hz	3	5	7.5	12.5	15	25	30	50	75	100	150	166.7
<b>L8HK□M</b>	High	kg-cm	60Hz	3.6	6	9	15	18	30	36	60	90	120	180	200
	Low		5.1	8.5	12.8	21.3	25.5	38.3	46.0	69.3	80	80	80	80	
<b>L8HK□B</b>	High	N-m	50Hz	0.50	0.83	1.25	2.08	2.50	3.76	4.51	6.79	7.84	7.84	7.84	7.84
	Low		0.21	0.36	0.54	0.89	1.07	1.61	1.93	2.91	4.37	5.82	7.84	7.84	
	High	oz-in	50Hz	71	118	177	295	354	532	639	962	1111	1111	1111	1111
	Low		30	51	76	127	152	228	274	412	619	825	1111	1111	

- \* The normal torque is that the motor and gearhead are directly coupled.
- \* Insert the denominator of reduction ratio in □ of gearhead model name.
- \* Actual rotation speed is 2~15% less than synchronous speed.
- \* ■Color indicates that the rotation of gearhead shaft is in opposite direction as output shaft of motor.

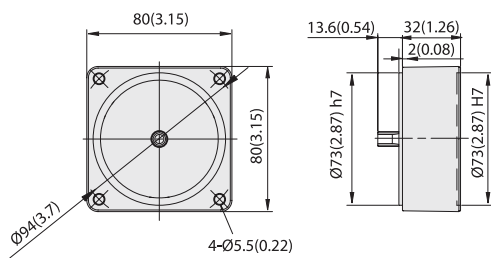
SPEED CONTROL REVERSIBLE MOTORS

**DIMENSIONS**

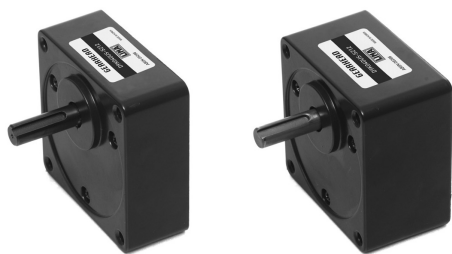
Unit : mm(inch)

**DECIMAL GEARHEAD**

**L8G10D**

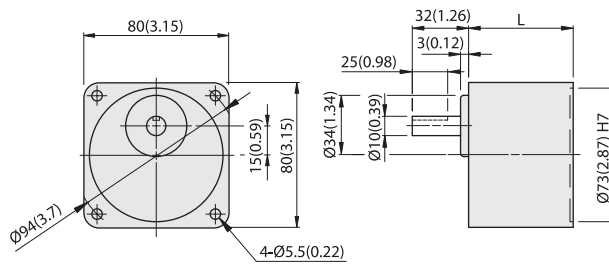


WEIGHT 0.4kg(0.88 lb)

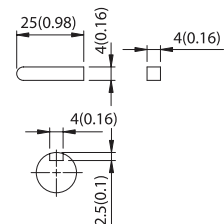


**GEARHEAD**

**L8HK□M(B)**



GEAR RATIO	L		WEIGHT		BOLT
	mm	in	kg	lb	
1/3~1/18	32	1.26	0.5	1.1	M5x50
1/20~1/200	46	1.81	0.7	1.5	M5x65



KEY SIZE

**L8HK□M(B) + L8R25P□LT**

